

## Ran

**Catalog Number:** 10112

**Synonyms:** Ras-related nuclear protein, TC4,Gsp1, ARA24

**Background:** Ran is a member of the Ras-superfamily GTPases. Ran is involved in control of DNA synthesis and of cell cycle progression, and the transport of proteins across the nuclear envelope, as well as in microtubule organization during mitosis.

**Amino Acid Sequence:** (1-216)

MAAQGEPQVQFKLVLVGDGGTGKTTFVKRHLTG  
EFEKKYVATLGVVHPLVFHTNRGPIKFNVWDTA  
GQEKFGGLRDGYIQAQCAIIMFDVTSRVTYKNV  
PNWHRDLVRVCENIPIVLCGNKVDIKDRKVKAKS  
IVFHRKKNLQYYDISAKSNYNFEKPFLWLARKLIG  
DPNLEFVAMPALAPPEVVM DPALAAQYEHDLV  
AQTTALPDEDDDL

**Source:** Human, recombinant full length, His6-tag

**Expression Host:** E. coli

**Molecular Weight:** 24 kDa

**Purity:** >95% by SDS-PAGE

**Constituents:** 20 mM Tris-HCl, pH 8.0, 150 mM NaCl.

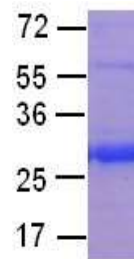
**Physical Appearance:** White or clear

**Concentration:** 1 mg/mL

**Storage:** -80°C

### Preparation Instructions

Adding of 10 mM  $\beta$ -mercaptoethanol or 1 mM DTT into the solution to protect the protein is recommended and using of non-ionic detergents such as n-Dodecyl  $\beta$ -D-maltoside (DoDM) or polyethylene detergents (e.g. C<sub>12</sub>E<sub>10</sub>) also help to stabilize the protein. Avoid repeated freezing and thawing.



The purity of His-tagged Ran was determined by DS-PAGE and Coomassie Brilliant Blue Staining

### References

1. Carazo-Salas, R. E. et al., Nature 400: 178-181, 1999.
2. Caudron, M. et al., Science 309: 1373-1376, 2005.
3. Kalab, P. et al., Nature 440: 697-701, 2006.
4. Lee, S. J. et al., Nature 435: 693-696, 2005.
5. Monecke, T. et al., Science 324: 1087-1091, 2009.
6. Ohba, T. et al., Science 284: 1356-1358, 1999.
7. Seewald, M. J. et al., Nature 415: 662-666, 2002.
8. Smith, A. E. et al., Science 295: 488-491, 2002.
9. Walther, T. C. et al., Nature 424: 689-694, 2003.
10. Wiese, C. et al., Science 291: 653-656, 2001.

FOR RESEARCH USE ONLY. NOT FOR DIAGNOSTIC APPLICATIONS